



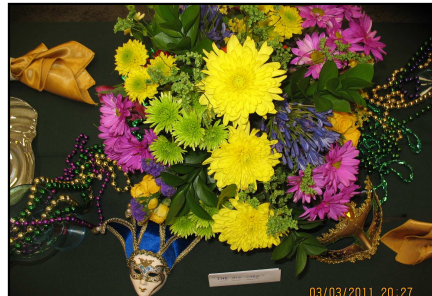
The Petal

A Monthly Publication by the Wichita Rose Society

Affiliated with the American Rose Society

March 2011

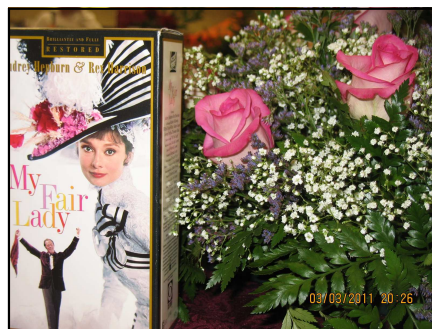
Wichita Garden Show



By Charmaine Nichols



By Lisel Weihe



By Norma Kemp



By Suja Mathew

Inside this Issue

- ◆ Get Growing!
- ◆ WRS Benefit Rose Sale
- ◆ Companion Plantings

Calendar of WRS Events

Tuesday, March 8

7 PM

WRS Regular Meeting
Botanica

Wednesday, March 17

St. Patrick's Day

Tuesday, April 19

7 PM

"The Hosta Guy"
Presentation

Botanica

Sunday, March 20

First Day of Spring

Thursday, March 24

12:30—3:30 PM

Project Beauty Cards,
Games & Dessert Party

Botanica

Thursday, March 31

Executive Board
Meeting

Our booth at the WGS is generating a lot of interest with the visitors. This year at the show we are offering a chance to win a *Graham Thomas* rose! From our drawing we are collecting many entries and hopefully will be able to capture a few new members in the process too. Thanks to all the members who chipped in their time to make the booth another success! ❖

**ANY MEMBER CAN ATTEND
WRS BOARD MEETINGS!**

Contact Joel Weihe for location.

Meeting Brief

TUESDAY, MARCH 8

- How to prune, transplant and select roses.
- Bring in your winter rose stories!

Refreshment Table

MARCH

DRINKS— Cindy Howey

FOOD— Suja Mathew, Mary Scheulen

REFRESHMENT COMMITTEE

Call Suja Mathew—729.0740



Articles for the April issue of *The Petal* must be submitted by April 5 to be published.

Send to: Sally Duncan

P.O. Box 3553, Wichita, Kansas 67201

Or email ThePetal@wichitarosesociety.org

WRS members and Master Gardeners Diana Jones, Norma Kemp or Cindy Vadakin will have tickets available for purchase at the March and April WRS meetings.



May 20-

Enjoy educational information, music & artists in the gardens!

May 22

Garden Tours

Tour 7 fabulous Wichita Gardens for only

\$8.00 (\$10 after May 7)



From the President's Desk

Joel Weihe

Friends,

We are in the throes of the famous Wichita Garden Show this week. And I really mean famous. Families come from out of town and even out of state to see our show!

We did something different with our little part of the show this year. The 2011 theme is "gardens in the movies", our own Bob Burrill organized a great booth that is turning out to be very popular amongst show goers. The Rose Society contribution is made up of 9 separate tables all decorated to represent members favorite movie. Each table has a flower arrangement and other items having to do with that particular movie. It is really something cool!

Several club members volunteered to take on the task of creating a table and I can say it turned out fantastic. If you haven't been by yet I surely hope you made it by Sunday.

The meeting this week will be a kick off to spring. We'll be covering important and popular topics such as when and how to prune your roses, buying and ordering roses and other topics about getting ready for the growing season.

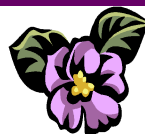
Now I have to confess I am a winter person. I like the cold, snow and blowing wind, but after 4 or 5 months of it I'm ready to see some green. Both kinds!

It looks like all of our roses are going to survive the winter this year again except maybe a couple I planted late in November. Bring in your winter rose stories to the meeting and let us all know how you think your roses fared the winter. Don't forget you can contact Sally Duncan or Mary Scheulen to sign up your garden this year for the Summer WRS Garden Tours.

See you all Tuesday!

Wichita African Violet Study Club

Violet Show & Sale



Saturday, March 12

11 AM—4 PM



Botanica—The Wichita Gardens

701 Amidon

Get Growing!

Kick off the growing season with these fun and educational events!

- ⊗ Saturday, March 12: 11 AM—4 PM African Violet Sale at Botanica
- ⊗ Tuesday, April 19: 7 PM Rob Mortko “The Hosta Guy” presentation at Botanica
- ⊗ Saturday, May 7: 7 AM—1 PM Herb Day at Sedgwick County Extension Office
- ⊗ Saturday, May 7: 7 AM—1 PM Rose Sale at Sedgwick County Extension Office
- ⊗ Saturday, May 14: 6:30 PM Wichita Rose Society Summer Garden Tour at member Cindy Vadakin’s home
- ⊗ Saturday, May 14: 9 AM—2 PM Prairie Winds Daylily Sale at Botanica—The Wichita Garden
- ⊗ Friday, May 20 — Sunday, May 22: 9 AM—5 PM Sedgwick County Master Gardener Garden Tours
- ⊗ Saturday, May 21: 6:30 PM Wichita Rose Society Summer Garden Tour at Hillside Nursery
- ⊗ Saturday, July 3: Wichita Daylily Club Show and Mini Sale at Botanica
- ⊗ Saturday, July 23: 7 AM Tomato Day at Sedgwick County Extension Office



WRS Summer Garden Tours

Would you like to show off your hard work? Sign up for the Summer Garden Tours! We still need 3 more gardens to add to our summer tour series. Your garden doesn't have to be perfect or even large, just share your ideas, and talent with us.

Dates Still Available

- **June**
- **August**
- **September**

Sign up today! Sallyann.duncan@gmail.com or 316.943.8578.

Varieties hard to find locally!

✧ English Roses

Mini's \$7.00

✧ Earth Kind Roses

Large \$12.00

✧ Miniature Roses

EARTH KIND ROSES	DAVID AUSTIN ENGLISH ROSES
Barn Dance	Abraham Darby
Carefree Beauty	Charlotte
Chuckles	Evelyn
Dublin Bay	Golden Celebration
New Dawn	Graham Thomas
Polonaise	Heritage
Prairie Harvest	Jude the Obscure
Quietness	Molineux
Seminole Wind	Scepter'd Isle
Winter Sunset	Sophy's Roses
	Spirit of Freedom
	Tamora
	The Dark Lady
	The Prince
	Tradescant

MINIATURE ROSES

- Calpoly
- Cinderella
- Coffee Bean
- Gizmo
- Good Morning America
- Green Ice
- Herbie
- Irrestible
- Jeanne Lajoie
- Jilly Jewel
- Magic Carrousel
- Merlot
- Orange Honey
- Overnight Scentsation
- Picotee
- Red Mimimo
- Secret Recipe
- Sequoia Gold
- Strawberry Swirl
- Sunswept
- Sweet Chariot
- Tangerine Jewel

Saturday

May 7

Benefit Rose Sale

7 am—1 pm

Sedgwick County

Extension Office

7001 West 21st Street North

Wichita, Kansas

Proceeds benefit the

Wichita Rose Society

www.wichitarosesociety.org

Wichita



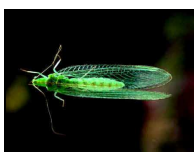
ROSE
SOCIETY

Attract beneficial insects to your garden

I have recently read a number of articles on various internet gardening sites about attracting and nurturing beneficial insects in your garden. I have used companion plants in my rose garden for many years because, even though my first love is roses, I prefer my garden to look like a garden and not a rose bed. Since I ceased spraying insecticide several years ago, the beneficial insect population has exploded. Many adult beneficial insects feed on the nectar and pollen of flowering plants in order to gain strength to search for prey. They also use these plants for shelter. Here are a few of the more common insects and their favorite plants:



Lady Beetles (ladybugs) are frequently cited as desirable for controlling aphid populations, but they also eat mites. Their larvae look like spiny little alligators. A few of the plants they enjoy are yarrow, bachelor's buttons, dill, fennel, veronicas and tansy.



Lacewings have slender green or brown bodies and lacey wings. Their larvae also look like tiny alligators, but are more slender and less colorful than ladybug larvae. Lacewings eat aphids, mites, scales in the soft-bodied stage, and other soft-bodied insects. They find yarrow, bachelor's buttons, dill, cosmos, fennel, and tansy attractive.



Minute Pirate bugs are extremely beneficial in a rose garden as they eat thrips, aphids, whiteflies, and mites as well as scale. They are tiny, dark-colored true bugs (shield-shaped) and you will find

them by looking among the petals of a rose blossom where you would find thrips. They like Shasta daisy, fennel and various forms of sunflower.



Hover flies or syrphid flies are often striped yellow and black and resemble small bees or wasps. They are harmless to humans and are also very valuable in a rose garden as both the adult and larval forms eat thrips and aphids. They are fond of alyssum, cosmos, statice, iberis, parsley, veronicas and yarrow.



Soldier beetles are slender, straight-sided beetles, usually having dark wings with bright orange or red parts found somewhere on the body. They are very valuable aphid predators. Their larvae are slender and worm-like and feed on grasshopper eggs, aphids, caterpillars and other soft-bodied insects. They like butterfly weed and goldenrod.

These are just a few of many beneficial insects and the myriad flowers they find useful. Most of these flowering plants are easily grown and there are varieties available that are not too invasive to use as companions in a rose garden. ❖

Card, Game & Dessert Party

Project Beauty



Botanica
12:30—3:30 PM

Thursday
March 24
Tickets \$7.00

Contact for Tickets:
316.522.5221

April 2 Topeka Shawnee County Public Library
1515 SW 10th Ave.

2011

Consulting Rosarian School

Open to current Consulting Rosarians or those who want to become CR's. Register by March 19, 2011. Receive 4 CR credits.

- 9:00 – Registration
- 9:30 – Sessions
- 11:30 – Lunch
- 12:30 – Sessions
- 2:30 – 3:00 – Conclusion

Requirements:

1. 3 yrs. Membership in American Rose Society.
2. Active in a local society.

Contact Joanne Langabee for forms: jlangabee@cox.net

Wichita Rose Society

2011 Officers

Joel Weihe	President	316.821.9437
Suja Mathew	2nd Vice President	316.729.0740
Cindy Howey	Secretary	316.445.2150
Kay Case	Treasurer	316.685.1948
Sally Duncan	Editor-Webmaster	316.943.8578

Consulting

Rosarians



Bob Burrill	316.721.4688	Carol Manke	316.729.6363
Kay Case	316.685.1948	cavi2_in_ks@att.net	
casecharles@sbcglobal.net		Suja Mathew	316.729.0740
Pat Horbelt	316.636.4504	kansas_gardener@hotmail.com	
dhorbelt@cox.net		Mary Scheulen	316.524.3165
Norma Kemp	316.722.0906	mscheulen@cox.net	
nkemp1@cox.net		Len Suchy	316.722.4403
Betsy Latta	316.267.8602	len2760@juno.com	
pmlatta@cox.net		Cindy Vadakin	316.258.1684
		cvadakin@cox.net	

Sally Duncan, Editor
P.O. Box 3553
Wichita, Kansas 67201

